

DESCRIPTION

NATURAL COOLING

Our client can manufacture small industrial modular DC UPS himself using our rectifier systems and its own DC distribution, batteries, cabinet and other accessories. For this reason, we have developed modular rectifier systems housed in a single rack.

The system consists of input AC distribution with overcurrent protection, one to four naturally cooled voltage rectifiers type MPLP 2500, microprocessor control unit type PMJ 04, and battery protection against overload, short circuit and deep discharge.

Maximum power of the rectifier system is 10 kW for natural cooling.

Input voltage is 230 V, 50 Hz, or 3 x 400/230 V, 50 Hz.

All the mentioned equipment is placed in one common 19" rack with a height of 10 U, i.e. 444 mm.

The system is structurally realized as a 19" rack, which can be installed in a 19" cabinet.

The customer can himself install output DC distribution, batteries and other equipment in that one cabinet, or more of them.

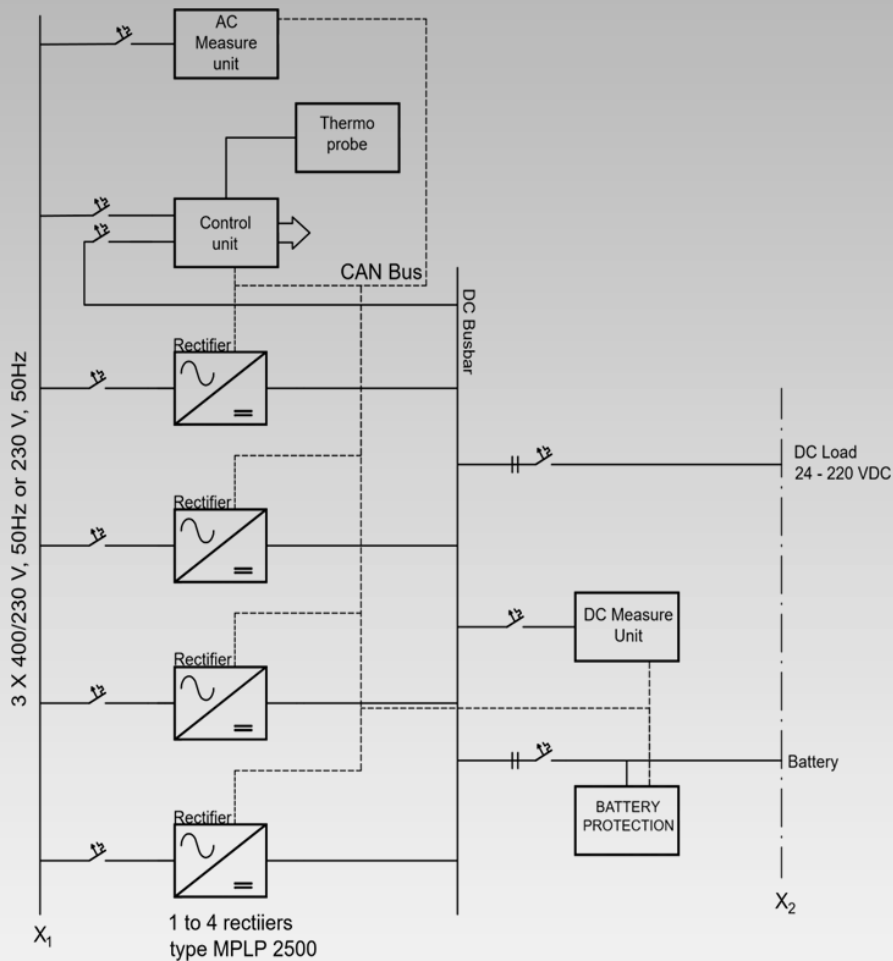
The rectifier system may or may not have battery protection.



| Type: | Output voltage VDC nominal | Output power W | No rectifiers |
|----------------|----------------------------|----------------|---------------|
| MRSN 24 – 1.5 | 24 | 1.500 | 1 |
| MRSN 24 – 3 | 24 | 3.000 | 2 |
| MRSN 24 – 4.5 | 24 | 4.500 | 3 |
| MRSN 24 – 6 | 24 | 6.000 | 4 |
| MRSN 48 – 2.5 | 48 | 2.500 | 1 |
| MRSN 48 – 5 | 48 | 5.000 | 2 |
| MRSN 48 – 7.5 | 48 | 7.500 | 3 |
| MRSN 48 – 10 | 48 | 10.000 | 4 |
| MRSN 60 – 2.5 | 60 | 2.500 | 1 |
| MRSN 60 – 5 | 60 | 5.000 | 2 |
| MRSN 60 – 7.5 | 60 | 7.500 | 3 |
| MRSN 60 – 10 | 60 | 10.000 | 4 |
| MRSN 110 – 2.5 | 110 | 2.500 | 1 |
| MRSN 110 – 5 | 110 | 5.000 | 2 |
| MRSN 110 – 7.5 | 110 | 7.500 | 3 |
| MRSN 110 – 10 | 110 | 10.000 | 4 |
| MRSN 220 – 2.5 | 220 | 2.500 | 1 |
| MRSN 220 – 5 | 220 | 5.000 | 2 |
| MRSN 220 – 7.5 | 220 | 7.500 | 3 |
| MRSN 220 – 10 | 220 | 10.000 | 4 |

THE SISTEM INCLUDES:

- Input circuit: protection switches for rectifiers, 1 to 4 pcs
protection switch for the control unit
surge protections
- Rectifiers – battery chargers, 2.500 W, type **MPLP 2.500**, 1 to 4 pcs
- Microprocessor control and monitoring unit with protection, type **MPJ 04**.
- Battery protection – over current and deep discharge
- Output MCB, two pole
- AUX power supplies for the MPJ 04, 230 V, 50 Hz input
- AUX power supplies for the MPJ 04, DC input (battery)
- Common housing, 19" rack, height 10 U, deep 305 mm
- Connections: row clamps, on the back



MARETON Power Electronics Ltd
Odranska str. 1, Zagreb, Croatia
www.mareton.hr, mareton@mareton.hr